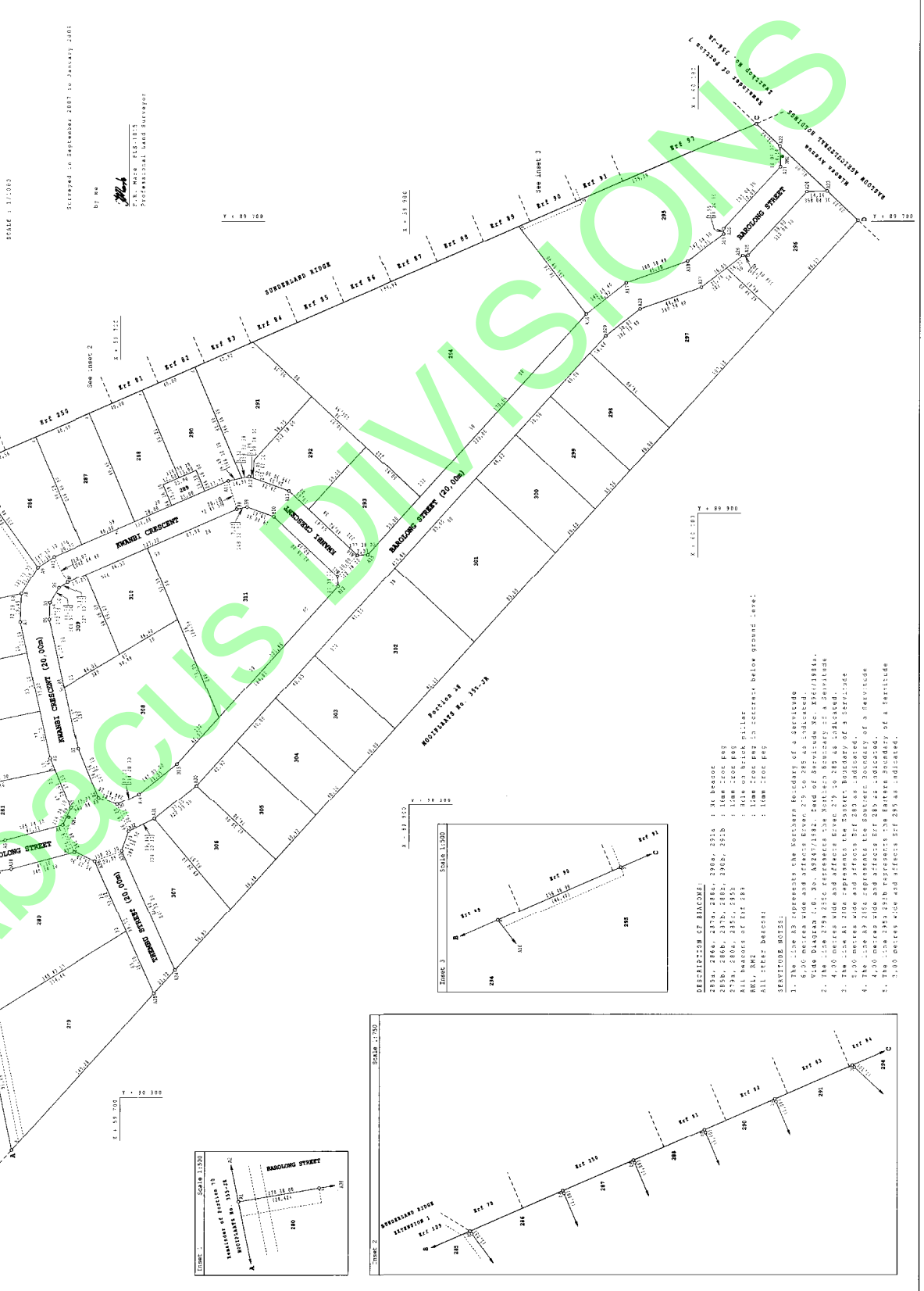


GENERAL PLAN
 OF THE TOWNSHIP
SUNDERLAND RIDGE EXTENSION 10
 COMPRISING 31 LOTES BOUNDARY LINES TO THE EAST

DATE OF APPLICATION: 17/01/2009
 DATE OF APPROVAL: 17/01/2009
MOOPLANTS NO. 355-JR

APPROVED ON SEPTEMBER 2007 TO JANUARY 2008
 DRAWN BY: M.A. MALHOTRA
 PROFESSIONAL LAND SURVEYOR

AREA	CO-ORDINATES	
	Easting (m)	Northing (m)
1	4812.28	4370.75
2	4812.28	4370.75
3	4812.28	4370.75
4	4812.28	4370.75
5	4812.28	4370.75
6	4812.28	4370.75
7	4812.28	4370.75
8	4812.28	4370.75
9	4812.28	4370.75
10	4812.28	4370.75
11	4812.28	4370.75
12	4812.28	4370.75
13	4812.28	4370.75
14	4812.28	4370.75
15	4812.28	4370.75
16	4812.28	4370.75
17	4812.28	4370.75
18	4812.28	4370.75
19	4812.28	4370.75
20	4812.28	4370.75
21	4812.28	4370.75
22	4812.28	4370.75
23	4812.28	4370.75
24	4812.28	4370.75
25	4812.28	4370.75
26	4812.28	4370.75
27	4812.28	4370.75
28	4812.28	4370.75
29	4812.28	4370.75
30	4812.28	4370.75
31	4812.28	4370.75



APPROVALS

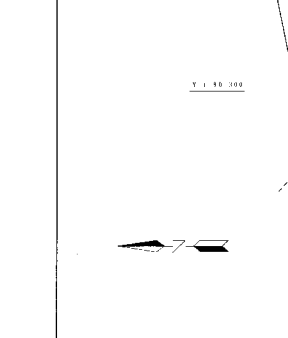
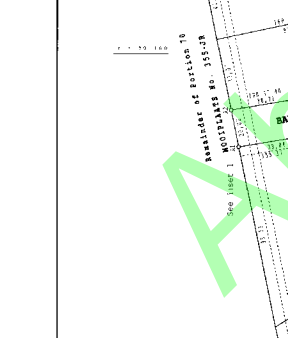
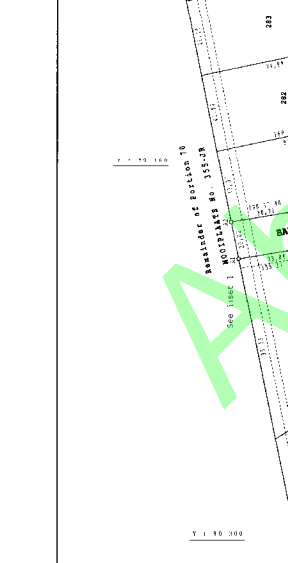
1. M.A. MALHOTRA, PROFESSIONAL LAND SURVEYOR
 2. M.A. MALHOTRA, PROFESSIONAL LAND SURVEYOR
 3. M.A. MALHOTRA, PROFESSIONAL LAND SURVEYOR

REMARKS

- The line AB represents the Northern boundary of a Servitude 4.50 metres wide and affects River 279 to 285 as indicated.
- The line BC represents the Eastern boundary of a Servitude 4.50 metres wide and affects River 279 to 285 as indicated.
- The line CD represents the Southern boundary of a Servitude 4.50 metres wide and affects River 279 to 285 as indicated.
- The line DE represents the Western boundary of a Servitude 4.50 metres wide and affects River 279 to 285 as indicated.
- The line EF represents the Northern boundary of a Servitude 4.50 metres wide and affects River 285 as indicated.

DESCRIPTION OF BEACONS

285A	285B	285C	285D	285E	285F
286A	286B	286C	286D	286E	286F
287A	287B	287C	287D	287E	287F
288A	288B	288C	288D	288E	288F
289A	289B	289C	289D	289E	289F
290A	290B	290C	290D	290E	290F
291A	291B	291C	291D	291E	291F
292A	292B	292C	292D	292E	292F
293A	293B	293C	293D	293E	293F
294A	294B	294C	294D	294E	294F
295A	295B	295C	295D	295E	295F
296A	296B	296C	296D	296E	296F
297A	297B	297C	297D	297E	297F
298A	298B	298C	298D	298E	298F
299A	299B	299C	299D	299E	299F
300A	300B	300C	300D	300E	300F
301A	301B	301C	301D	301E	301F
302A	302B	302C	302D	302E	302F
303A	303B	303C	303D	303E	303F
304A	304B	304C	304D	304E	304F
305A	305B	305C	305D	305E	305F
306A	306B	306C	306D	306E	306F



PI TOUR 0239